

**ALASKA DIVISION OF HOMELAND  
SECURITY & EMERGENCY MANAGEMENT**  
**SITUATION REPORT**  
**25-100 April 10, 2025**



Toll-Free 1.800.478.2337

Anchorage Area 907.428.7000

SEOC 907.428.7100

<b><u>SEOC Preparedness Level</u></b>  Level 1	<a href="http://ready.alaska.gov">http://ready.alaska.gov</a>	<b><u>Alaska Military Installation Force Protection Level:</u></b>  FPCON Bravo
	<b><u>Maritime Security (MARSEC)</u></b> Level:1- Minimum Appropriate Security Measures	

(Significant changes from previous situation reports are red.)

**Significant Issues:**

None

**Department of Health (DOH):**

For resources and current information, see: <https://health.alaska.gov/en/>

**NTAS Bulletin:**

The U.S. Department of Homeland Security issued an updated National Terrorism Advisory Bulletin on May 24, 2023. The current and expired bulletins can be viewed at the below link.

<https://www.dhs.gov/national-terrorism-advisory-system>

**Travel Alerts and Conditions:**

*Ketchikan Tongass Hwy at Wolfe Point:* Expect delays due to rock scaling operations and blasting efforts. Two lane traffic will be open from 6:00 PM to 8:30 AM until further notice.

For current driving conditions, dial 511 or visit: <https://511.alaska.gov/>

**Barry Arm Landslide / Tsunami Risk:**

Currently shows no signs of large-scale active deformation but smaller-scale instabilities on the surface of the landslide still pose a threat of localized tsunami generation in Barry Arm. Mariners transiting near Barry Arm should remain vigilant.

For the latest information on the Barry Arm Landslide and Tsunami risk, click here:

<https://dggs.alaska.gov/hazards/barry-arm-landslide.html>

**Earthquakes:**

United States Geological Service (USGS) Earthquake Information:

<https://www.usgs.gov/programs/earthquake-hazards>

National Tsunami Warning Center: <https://tsunami.gov/>

## Alaska Volcanoes:

**Great Sitkin Alert Level: Watch** and Aviation Color Code: **Orange**

**Mt. Spurr Alert Level: Advisory** and Aviation Color Code: **Yellow**

For Alaska Volcano updates, go to: <https://www.avo.alaska.edu/>

## Air Quality Index (AQI) Advisories:

No active advisories/episodes are currently in effect.

For the most up-to-date Air Quality Index Advisories:

<https://dec.alaska.gov/Applications/Air/airtoolsweb/Advisories>

## Spills of Oil and Hazardous Substances:

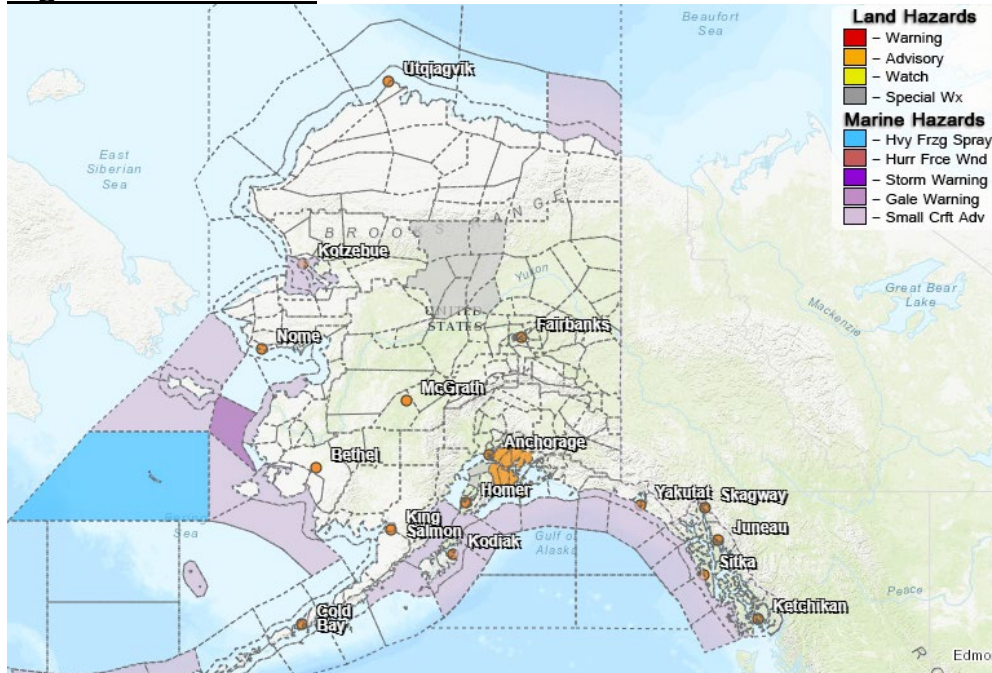
The Alaska Division of Environmental Conservation (ADEC) Spill Prevention and Response page is located at: <https://dec.alaska.gov/spar/>

## Alaska Cyber Security Information:

State Employees may sign up for cybersecurity notifications and alerts at:

<https://oit.alaska.gov/security>

## Significant Weather:



**Special Weather Statement:** Bands of snow continue till Thursday morning

***NW Kenai Peninsula***

**Winter Weather Advisory:** Remains in effect from 10am this morning till Friday

***East Turnagain Arm; Portage; Turnagain Pass; West Prince William Sound & Whittier***

**Winter Weather Advisory:** Remains in effect from 10am this morning till Friday

***Anchorage; Anchorage Hillside / Eagle River***

**Winter Weather Advisory:** Remains in effect from 1pm this afternoon

***Southern Kachemak Bay; SW Kenai Peninsula***

**Winter Weather Advisory:** Winter Weather Advisory until April 11 at 10:00AM

***Interior Kenai Peninsula***

For more weather updates and information, go to <https://weather.gov/arh/>

## Alaska Wildland 2024 Fire Season:

The Alaska Interagency Coordination Center is at Preparedness Level:

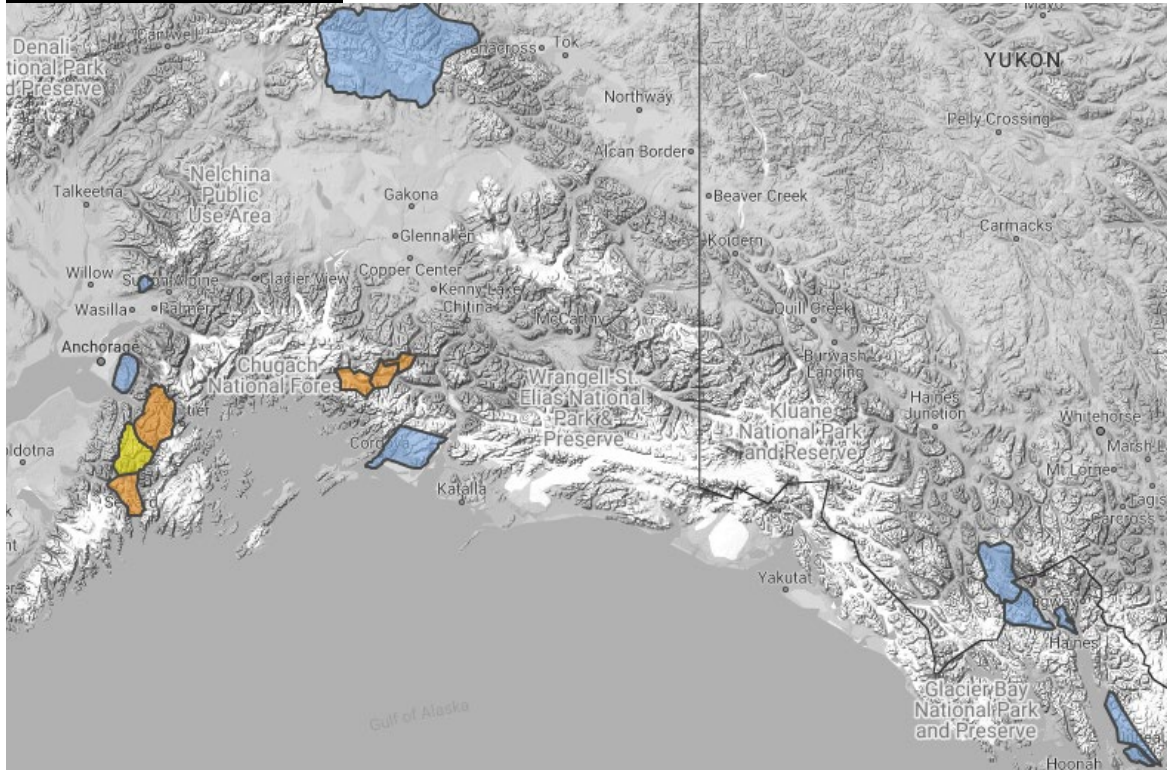
Total Fires YTD: 17

Total Acres: 4

There are currently 3 active fire(s) with 0 new and 0 fires staffed.

For more information, go to <https://fire.ak.blm.gov/> or <https://akfireinfo.com/>

## Avalanche Conditions



**Turnagain Pass** – Considerable above 1000. Moderate below 1000

**Summit Lake** –Moderate at all levels

**Seward and Lost Lake** – Considerable above 1000. Moderate below 1000

**Valdez Maritime-** Considerable at all levels

**Intermountain & Continental** – Considerable at all levels

**Hatcher Pass** –Low at all levels

For more information and the most current avalanche conditions, go to: <https://alaskasnow.org/>

**The Next Situation Report** will be on **April 11, 2025**. A significant situation or threat level change will prompt an interim report. This report is posted on the internet at <https://ready.alaska.gov/sitrep>.

**To register for email distribution, PLEASE go to:**

<http://list.state.ak.us/mailman/listinfo/dhsem.situation.report>.

Direct questions regarding this report to the SEOC at 907-428-7100 or [seoc@alaska.gov](mailto:seoc@alaska.gov).